



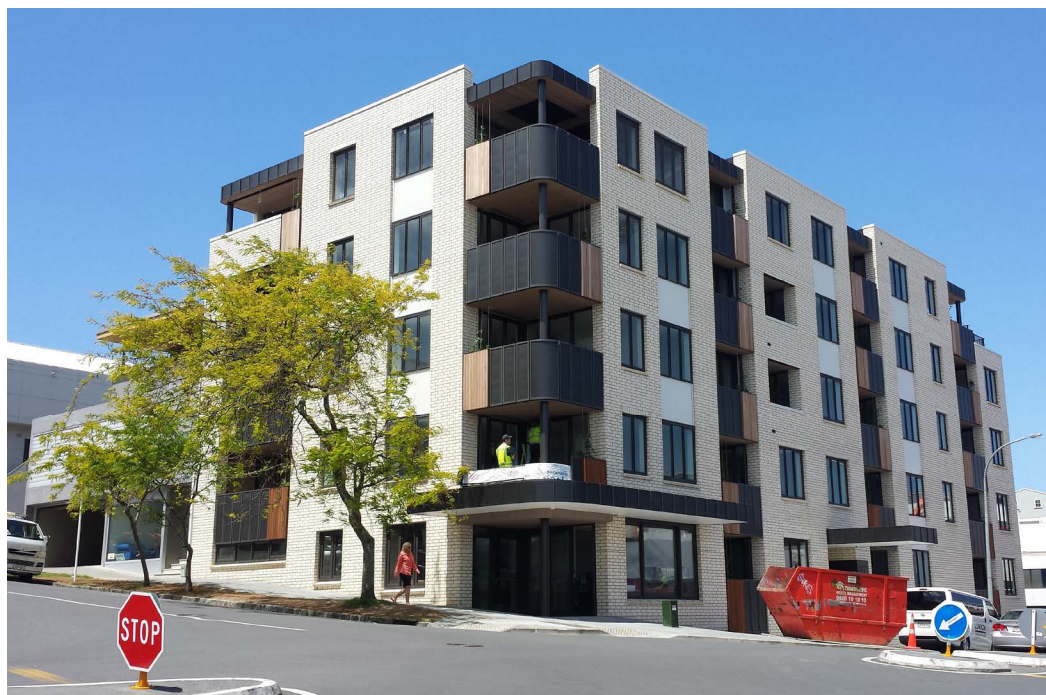
BRANZ Appraised

Appraisal No. 808 [2013]

ARIDON® SMART WALL SYSTEM

Appraisal No. 808 [2013]

Amended 21 March 2017



BRANZ Appraisals

Technical Assessments of products for building and construction.



Aridon Ltd

PO Box 1862
Palmerston North 4440

Tel: 06 358 8056

Email: info@aridon.co.nz

Web: www.aridon.co.nz



BRANZ

BRANZ

1222 Moonshine Rd,
RD1, Porirua 5381
Private Bag 50 908
Porirua 5240,
New Zealand
Tel: 04 237 1170
branz.co.nz



Product

- 1.1 The ARIDON® Smart Wall System is a rigid air barrier, rigid wall underlay, thermal insulation and temporary weather-protecting sheathing for use under cavity fixed wall claddings on timber and steel framed buildings.
- 1.2 The ARIDON® Smart Wall System comprises ARIDON® flat panels which are formed from high density expanded polystyrene (EPS) with an interlocking edge profile. Timber battens are fixed over the ARIDON® panels to provide fixing for wall claddings.
- 1.3 The system incorporates a primary and secondary means of weather resistance (first and second line of defence) against water penetration by separating the cladding from the ARIDON® panels with a minimum 35 mm cavity.

Scope

Timber and Steel Framing up to Extra High Wind Zone

- 2.1 The ARIDON® Smart Wall System has been appraised for use on buildings within the following scope:
 - constructed with timber framing in accordance with the scope limitations of NZBC Acceptable Solution E2/AS1, Paragraph 1.1; or,
 - constructed with steel framing subject to specific engineering design, with the building height and floor plan area in accordance with the scope limitations of NZBC Acceptable Solution E2/AS1, Paragraph 1.1; and,
 - situated in NZS 3604 Wind Zones up to and including Extra High; and,
 - with wall claddings in accordance with NZBC Acceptable Solution E2/AS1; or,
 - with proprietary wall cladding systems, which specify vertically or horizontally fixed cavity battens. *[Note: proprietary wall cladding systems have not been assessed and are outside the scope of this Appraisal];* or
 - with Masonry veneer in accordance with NZBC Acceptable Solution E2/AS1 for timber framed buildings, and specific engineering design for steel framed buildings.